

# Hepatobiliary and Pancreatic Nurse Specialist Service

Information for Patients

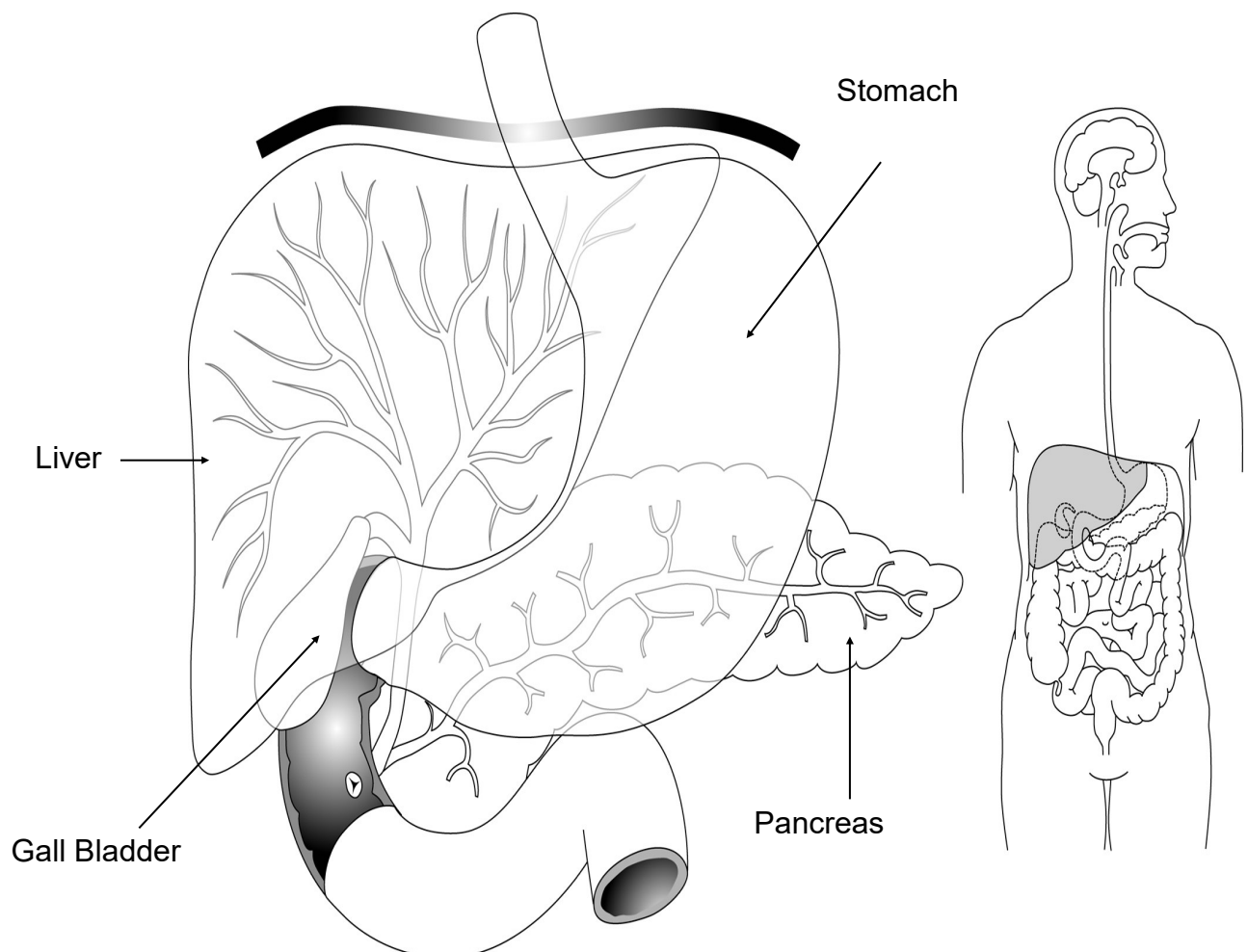
Leaflet number: 574

Version: 8

Hepatobiliary & Pancreatic Services

Produced: Jan 2025

Review: Jan 2028



**Health information and support is available at [www.nhs.uk](http://www.nhs.uk)  
or call 111 for non-emergency medical advice**

Visit [www.leicestershospitals.nhs.uk](http://www.leicestershospitals.nhs.uk) for maps and information about visiting Leicester's Hospitals  
To give feedback about this information sheet, contact [InformationForPatients@uhl-tr.nhs.uk](mailto:InformationForPatients@uhl-tr.nhs.uk)

## **Introduction**

This leaflet is intended for patients who have a suspected or confirmed diagnosis of benign (non-cancerous) or malignant (cancerous) disease in the liver, pancreas or biliary tract.

## **The role of your nurse specialist (key worker)**

### **Your nurse specialist will**

Provide you with the appropriate information that you require about your illness.

- Ensure that you are given clear information concerning your disease, procedures and treatments, to enable you to make informed decisions about your care.
- Provide support from the time of diagnosis onwards.
- Refer you to other professionals as appropriate.
- Act as a permanent contact for you.
- Co-ordinate your care.

## **How can I contact my nurse specialist?**

### **If you are an out-patient:**

- Your nurse specialist will be available when you attend your consultant surgeon's out-patient clinic.
- You can telephone your nurse specialist during office hours for advice and support. Contact details are below.

### **If you are in hospital:**

- Your nurse specialist will visit you regularly while you are in hospital.
- You can ask a member of the ward staff to contact your nurse specialist if you need to speak to her between her visits.

If you need to speak to a member of the Hepatobiliary and Pancreatic Nurse Specialist Service, contact them using the details on the card they will have given you."

## **Useful contacts**

### **Macmillan Information & Support Centre**

Osborne Building, Leicester Royal Infirmary, Leicester, LE1 5WW

Telephone: (0116) 258 6189

Email: [cancerinfo@uhl-tr.nhs.uk](mailto:cancerinfo@uhl-tr.nhs.uk)

Website: [www.leicestershospitals.nhs.uk/cancerinfo](http://www.leicestershospitals.nhs.uk/cancerinfo)

**Useful contacts (continued)****Leicester HPB Unit**

Leicester Hepatic, Pancreatic and Biliary Disease Unit

Website: [www.hpbleicester.com](http://www.hpbleicester.com)

**Sue Young Cancer Support**

Helen Webb House, 35 Westleigh Road, Leicester, LE3 0HH

Telephone: (0116) 223 0055

Website: [www.sueyoungcancersupport.org.uk](http://www.sueyoungcancersupport.org.uk)

**Pancreatic Cancer UK**

A central resource of information on pancreatic cancer.

Website: [www.pancreaticcancer.org.uk](http://www.pancreaticcancer.org.uk)

**Macmillan Cancer Support**

For information and support from specialist nurses

Freephone: 0808 808 00 00

Website: [www.macmillan.org.uk](http://www.macmillan.org.uk)

اگر آپ کو یہ معلومات کسی اور زبان میں درکار ہیں، تو براہ کرم مندرجہ ذیل نمبر پر ٹیلی فون کریں۔  
على هذه المعلومات بلغة أخرى، الرجاء الاتصال على رقم الهاتف الذي يظهر في الأسفل  
જો તમને અન્ય ભાષામાં આ માહિતી જોઈતી હોય, તો નીચે આપેલ નંબર પર કૃપા કરી ટેલિફોન કરો

ਜੇ ਤੁਸੀਂ ਇਹ ਜਾਣਕਾਰੀ ਕਿਸੇ ਹੋਰ ਭਾਸ਼ਾ ਵਿਚ ਚਾਹੁੰਦੇ ਹੋ, ਤਾਂ ਕਿਰਪਾ ਕਰਕੇ ਹੇਠਾਂ ਦਿੱਤੇ ਗਏ ਨੰਬਰ 'ਤੇ ਟੈਲੀਫੋਨ ਕਰੋ।  
Aby uzyskać informacje w innym języku, proszę zadzwonić pod podany niżej numer telefonu

If you would like this information in another language or format such as EasyRead or Braille, please telephone 0116 250 2959 or email [equality@uhl-tr.nhs.uk](mailto:equality@uhl-tr.nhs.uk)